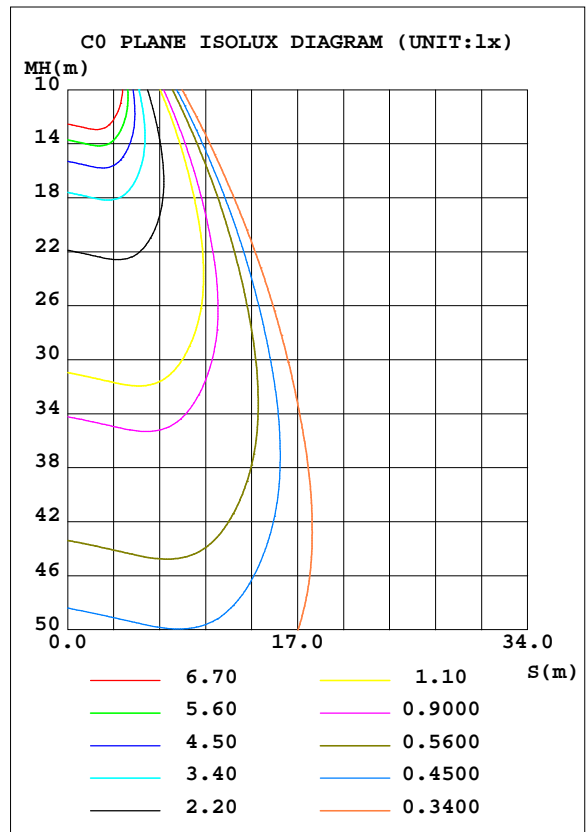
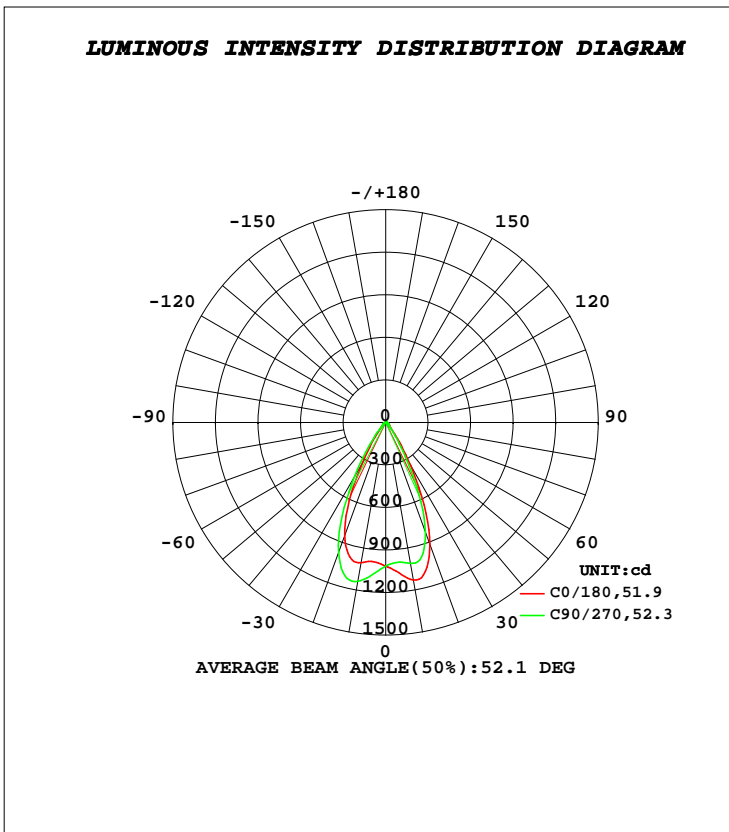


**LUMINAIRE PHOTOMETRIC TEST REPORT**

Test:U:230.10V I:0.0431A P:9.1397W PF:0.9209 Freq:50.00Hz Lamp Flux:860.28x1 lm		
NAME:	TYPE:LED	WEIGHT:
SPEC.:9w	DIM.:	SERIAL No.:1
MFR.: EVERFINE	SUR.:	Shielding Angle:

DATA OF LAMP		PHOTOMETRIC DATA				Eff: 94.13 lm/W
MODEL	SO30	I <sub>max</sub> (cd)	1169	S/MH(C0/180)	0.78	
NOMINAL POWER(W)	9	LOR(%)	100.0	S/MH(C90/270)	0.84	
RATED VOLTAGE(V)	230	TOTAL FLUX(lm)	860.28	η UP, DN(C0-180)	0.5,45.8	
NOMINAL FLUX(lm)	860.28	CIE CLASS	DIRECT	η UP, DN(C180-360)	0.4,53.3	
LAMPS INSIDE	1	η up(%)	0.8	CIBSE SHR NOM	0.75	
TEST VOLTAGE(V)	230	η down(%)	99.2	CIBSE SHR MAX	0.80	



**C Range: 0 - 360DEG**  
**C Interval: 22.5DEG**  
**Test Speed: HIGH**  
**Temperature:15DEG**  
**Operators:**  
**Test Date:2020-09-27**

**γ Range: 0 - 180DEG**  
**γ Interval: 1.0DEG**  
**Test System:EVERFINE GO-2000A\_V1 SYSTEM V2.0.407.13**  
**Humidity:71%**  
**Test Distance:6.700m [K=1.0000]**  
**Remarks:**

**ZONAL FLUX DIAGRAM**

**ZONAL FLUX DIAGRAM:**

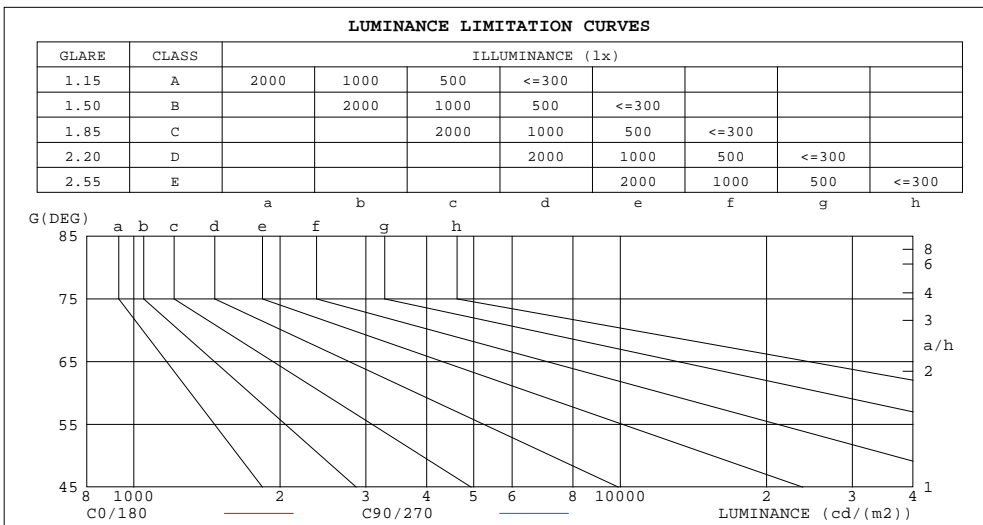
$\gamma$	C0	C45	C90	C135	C180	C225	C270	C315	$\gamma$	$\Phi$ zone	$\Phi$ total	%lum,lamp
10	1128	1072	1008	986.3	1004	1075	1138	1161	0- 10	99.75	99.75	11.6,11.6
20	913.9	861.5	818.1	789.1	845.7	910.3	973.2	994.3	10- 20	286.8	386.6	44.9,44.9
30	356.5	316.5	277.9	268.2	327.1	381.9	439.1	444.0	20- 30	283.1	669.7	77.8,77.8
40	75.88	68.30	61.44	57.32	73.68	83.01	102.1	104.7	30- 40	112.7	782.3	90.9,90.9
50	28.10	28.00	26.56	26.42	28.65	29.31	30.52	30.63	40- 50	33.92	816.2	94.9,94.9
60	18.12	17.20	16.00	16.11	18.00	18.50	19.70	19.42	50- 60	20.32	836.6	97.2,97.2
70	7.687	6.918	6.359	6.345	7.651	8.118	8.819	8.986	60- 70	12.56	849.1	98.7,98.7
80	0.2516	0.2670	0.2630	0.2671	0.3482	0.3646	0.3844	0.4276	70- 80	3.741	852.9	99.1,99.1
90	0.0152	0.0186	0.0191	0.0192	0.0121	0.0062	0.0032	0.0032	80- 90	0.1154	853.0	99.2,99.2
100	0.0330	0.0308	0.0348	0.0320	0.0452	0.0433	0.0379	0.0322	90-100	0.0245	853.0	99.2,99.2
110	0.1201	0.1267	0.1516	0.1534	0.1204	0.1115	0.0950	0.0994	100-110	0.0750	853.1	99.2,99.2
120	0.4205	0.4732	0.5306	0.5437	0.3614	0.3255	0.2940	0.2852	110-120	0.2313	853.3	99.2,99.2
130	1.107	1.221	1.334	1.361	1.005	0.9345	0.8637	0.8366	120-130	0.6284	853.9	99.3,99.3
140	2.095	2.259	2.405	2.459	2.068	1.928	1.799	1.768	130-140	1.206	855.2	99.4,99.4
150	3.208	3.368	3.523	3.570	3.258	3.087	2.953	2.913	140-150	1.662	856.8	99.6,99.6
160	4.141	4.278	4.422	4.401	4.181	4.059	4.028	4.003	150-160	1.720	858.5	99.8,99.8
170	4.800	4.872	4.946	4.920	4.828	4.714	4.755	4.773	160-170	1.271	859.8	99.9,99.9
180	5.240	5.175	5.200	5.250	5.303	5.215	5.228	5.270	170-180	0.4774	860.3	100,100
DEG	LUMINOUS INTENSITY:cd									UNIT:lm		

**C Range: 0 - 360DEG**  
**C Interval: 22.5DEG**  
**Test Speed: HIGH**  
**Temperature:15DEG**  
**Operators:**  
**Test Date:2020-09-27**

**$\gamma$  Range: 0 - 180DEG**  
 **$\gamma$  Interval: 1.0DEG**  
**Test System:EVERFINE GO-2000A\_V1 SYSTEM V2.0.407.13**  
**Humidity:71%**  
**Test Distance:6.700m [K=1.0000]**  
**Remarks:**

**LUMINANCE LIMITATION CURVES**

Test:U:230.10V I:0.0431A P:9.1397W PF:0.9209 Freq:50.00Hz Lamp Flux:860.28x1 lm		
NAME:	TYPE:LED	WEIGHT:
SPEC.:9w	DIM.:	SERIAL No.:1
MFR.: EVERFINE	SUR.:	Shielding Angle:



LUMINANCE cd/(m2)		
G(DEG)	C0/180	C90/270
85	7	9
80	12	12
75	100	73
70	187	147
65	257	207
60	302	253
55	325	285
50	364	327
45	440	394

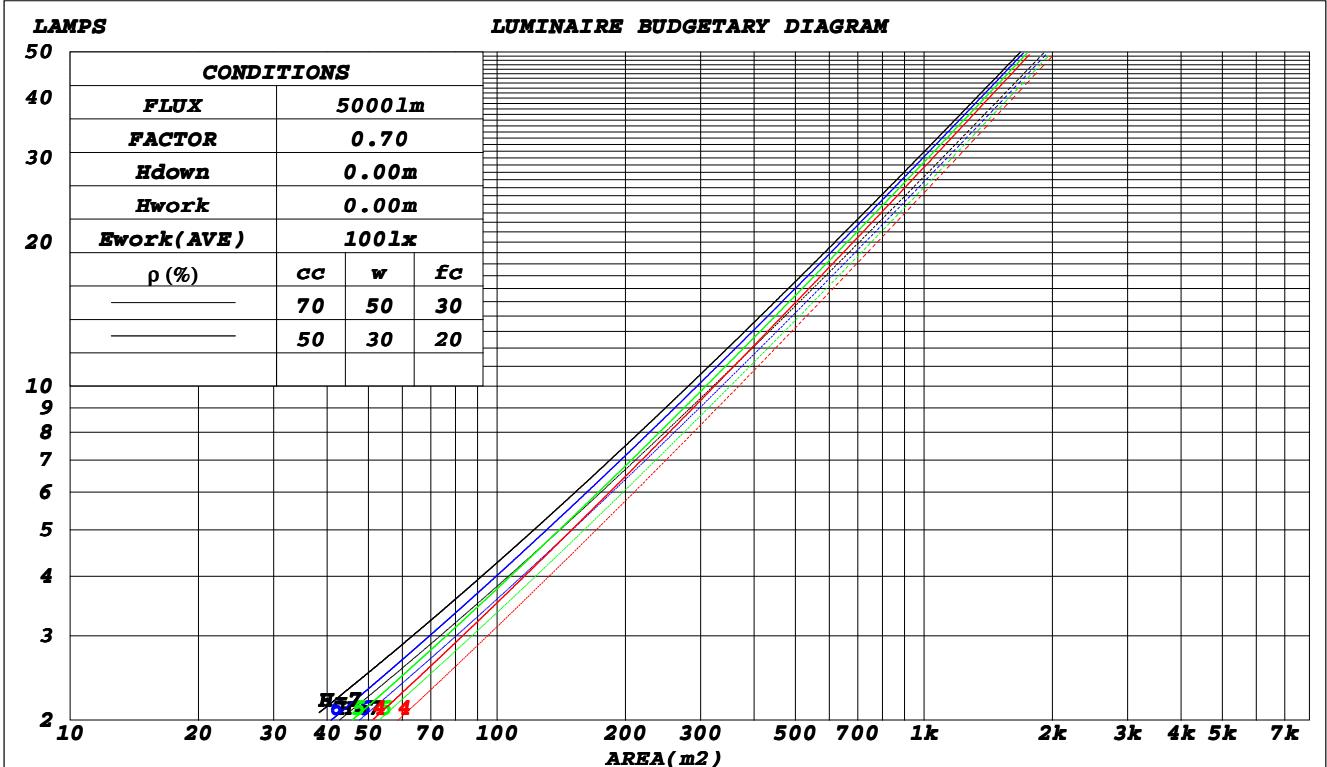
**C Range: 0 - 360DEG**  
**C Interval: 22.5DEG**  
**Test Speed: HIGH**  
**Temperature: 15DEG**  
**Operators:**  
**Test Date: 2020-09-27**

**γ Range: 0 - 180DEG**  
**γ Interval: 1.0DEG**  
**Test System: EVERFINE GO-2000A\_V1 SYSTEM V2.0.407.13**  
**Humidity: 71%**  
**Test Distance: 6.700m [K=1.0000]**  
**Remarks:**

CU AND LUMINAIRE BUDGETARY ESTIMATE DIAGRAM

Test:U:230.10V I:0.0431A P:9.1397W PF:0.9209 Freq:50.00Hz Lamp Flux:860.28x1 lm		
NAME:	TYPE:LED	WEIGHT:
SPEC.:9w	DIM.:	SERIAL No.:1
MFR.: EVERFINE	SUR.:	Shielding Angle:

$\rho_{cc}$	80%			70%			50%			30%			10%			0
$\rho_w$	50%	30%	10%	50%	30%	10%	50%	30%	10%	50%	30%	10%	50%	30%	10%	0
$\rho_{fc}$	20%			20%			20%			20%			20%			0
<b>RCR</b>	<b>RCR:Room Cavity Ratio</b>															
	<b>Coefficients of Utilization(CU)</b>															
0.0	1.19	1.19	1.19	1.16	1.16	1.16	1.11	1.11	1.11	1.06	1.06	1.06	1.01	1.01	1.01	.99
1.0	1.11	1.08	1.06	1.08	1.06	1.04	1.04	1.02	1.01	1.00	.99	.98	.97	.96	.95	.93
2.0	1.03	.99	.96	1.01	.98	.95	.98	.95	.92	.95	.92	.90	.92	.90	.88	.87
3.0	.96	.91	.87	.95	.90	.87	.92	.88	.85	.90	.86	.84	.87	.85	.82	.81
4.0	.90	.85	.81	.89	.84	.80	.87	.83	.79	.85	.81	.78	.83	.80	.77	.76
5.0	.85	.79	.75	.84	.79	.75	.82	.77	.74	.80	.76	.73	.79	.75	.72	.71
6.0	.80	.74	.70	.79	.74	.70	.78	.73	.69	.76	.72	.69	.75	.71	.68	.67
7.0	.76	.70	.66	.75	.69	.65	.73	.69	.65	.72	.68	.65	.71	.67	.64	.63
8.0	.72	.66	.62	.71	.65	.62	.70	.65	.61	.69	.64	.61	.68	.64	.61	.59
9.0	.68	.62	.58	.67	.62	.58	.66	.61	.58	.65	.61	.58	.65	.60	.57	.56
10.0	.64	.59	.55	.64	.59	.55	.63	.58	.55	.62	.58	.55	.62	.57	.55	.53



C Range: 0 - 360DEG  
 C Interval: 22.5DEG  
 Test Speed: HIGH  
 Temperature: 15DEG  
 Operators:  
 Test Date: 2020-09-27

$\gamma$  Range: 0 - 180DEG  
 $\gamma$  Interval: 1.0DEG  
 Test System: EVERFINE GO-2000A\_V1 SYSTEM V2.0.407.13  
 Humidity: 71%  
 Test Distance: 6.700m [K=1.0000]  
 Remarks:

**WEC AND CCEC**

Test:U:230.10V I:0.0431A P:9.1397W PF:0.9209 Freq:50.00Hz Lamp Flux:860.28x1 lm		
NAME:	TYPE:LED	WEIGHT:
SPEC.:9w	DIM.:	SERIAL No.:1
MFR.: EVERFINE	SUR.:	Shielding Angle:

$\rho_{cc}$	80%			70%			50%			30%			10%			0
$\rho_w$	50%	30%	10%	50%	30%	10%	50%	30%	10%	50%	30%	10%	50%	30%	10%	0
$\rho_{fc}$	20%			20%			20%			20%			20%			0
<b>RCR</b>	<b>RCR:Room Cavity Ratio</b>						<b>Wall Exitance Coefficients(WEC)</b>									
0.0																
1.0	.177	.101	.032	.170	.097	.031	.157	.090	.029	.145	.084	.027	.134	.078	.025	
2.0	.169	.093	.028	.163	.090	.028	.152	.085	.026	.142	.080	.025	.133	.075	.024	
3.0	.160	.085	.026	.155	.083	.025	.146	.079	.024	.137	.075	.023	.129	.072	.022	
4.0	.152	.079	.023	.148	.077	.023	.140	.074	.022	.132	.071	.021	.125	.068	.021	
5.0	.144	.074	.021	.141	.072	.021	.134	.070	.020	.127	.067	.020	.121	.064	.019	
6.0	.137	.069	.020	.134	.068	.019	.128	.066	.019	.122	.063	.019	.116	.061	.018	
7.0	.131	.065	.018	.128	.064	.018	.122	.062	.018	.117	.060	.017	.112	.058	.017	
8.0	.125	.061	.017	.122	.060	.017	.118	.059	.017	.113	.057	.016	.108	.056	.016	
9.0	.120	.058	.016	.117	.057	.016	.113	.056	.016	.109	.054	.016	.105	.053	.015	
10.0	.115	.055	.015	.113	.054	.015	.109	.053	.015	.105	.052	.015	.101	.051	.015	

$\rho_{cc}$	80%			70%			50%			30%			10%			0
$\rho_w$	50%	30%	10%	50%	30%	10%	50%	30%	10%	50%	30%	10%	50%	30%	10%	0
$\rho_{fc}$	20%			20%			20%			20%			20%			0
<b>RCR</b>	<b>RCR:Room Cavity Ratio</b>						<b>Ceiling Cavity Exitance Coefficients(CCEC)</b>									
0.0	.197	.197	.197	.168	.168	.168	.115	.115	.115	.066	.066	.066	.021	.021	.021	
1.0	.178	.164	.151	.152	.141	.130	.104	.097	.090	.060	.056	.052	.019	.018	.017	
2.0	.162	.139	.119	.139	.120	.103	.095	.083	.072	.055	.048	.042	.018	.016	.014	
3.0	.150	.120	.096	.129	.104	.084	.088	.072	.059	.051	.042	.035	.016	.014	.011	
4.0	.140	.105	.079	.120	.091	.069	.082	.063	.049	.048	.037	.029	.015	.012	.009	
5.0	.131	.094	.067	.112	.081	.058	.077	.057	.041	.045	.033	.024	.014	.011	.008	
6.0	.123	.084	.057	.106	.073	.049	.073	.051	.035	.042	.030	.021	.014	.010	.007	
7.0	.116	.077	.049	.100	.067	.043	.069	.047	.030	.040	.028	.018	.013	.009	.006	
8.0	.111	.071	.043	.095	.061	.038	.066	.043	.027	.038	.025	.016	.012	.008	.005	
9.0	.106	.065	.038	.091	.057	.033	.063	.040	.024	.037	.024	.014	.012	.008	.005	
10.0	.101	.061	.034	.087	.053	.030	.060	.037	.021	.035	.022	.013	.011	.007	.004	

**C Range: 0 - 360DEG**  
**C Interval: 22.5DEG**  
**Test Speed: HIGH**  
**Temperature:15DEG**  
**Operators:**  
**Test Date:2020-09-27**

**$\gamma$  Range: 0 - 180DEG**  
 **$\gamma$  Interval: 1.0DEG**  
**Test System:EVERFINE GO-2000A\_V1 SYSTEM V2.0.407.13**  
**Humidity:71%**  
**Test Distance:6.700m [K=1.0000]**  
**Remarks:**

**UGR(Unified Glare Rating) Table**

Test:U:230.10V I:0.0431A P:9.1397W PF:0.9209 Freq:50.00Hz Lamp Flux:860.28x1 lm										
NAME:			TYPE:LED				WEIGHT:			
SPEC.:9w			DIM.:				SERIAL No.:1			
MFR.: EVERFINE			SUR.:				Shielding Angle:			
<b>ceiling/cavity</b>	<b>0.7</b>	<b>0.7</b>	<b>0.5</b>	<b>0.5</b>	<b>0.3</b>	<b>0.7</b>	<b>0.7</b>	<b>0.5</b>	<b>0.5</b>	<b>0.3</b>
<b>walls</b>	<b>0.5</b>	<b>0.3</b>	<b>0.5</b>	<b>0.3</b>	<b>0.3</b>	<b>0.5</b>	<b>0.3</b>	<b>0.5</b>	<b>0.3</b>	<b>0.3</b>
<b>working plane</b>	<b>0.2</b>	<b>0.2</b>	<b>0.2</b>	<b>0.2</b>	<b>0.2</b>	<b>0.2</b>	<b>0.2</b>	<b>0.2</b>	<b>0.2</b>	<b>0.2</b>
<b>Room dimensions</b>	<b>Viewed crosswise</b>					<b>Viewed endwise</b>				
<b>x = 2H y = 2H</b>	<b>5.7</b>	<b>6.6</b>	<b>5.9</b>	<b>6.8</b>	<b>7.0</b>	<b>4.6</b>	<b>5.6</b>	<b>4.9</b>	<b>5.7</b>	<b>5.9</b>
<b>3H</b>	<b>6.0</b>	<b>6.9</b>	<b>6.3</b>	<b>7.1</b>	<b>7.3</b>	<b>4.9</b>	<b>5.8</b>	<b>5.2</b>	<b>6.0</b>	<b>6.2</b>
<b>4H</b>	<b>6.0</b>	<b>6.8</b>	<b>6.3</b>	<b>7.1</b>	<b>7.3</b>	<b>4.9</b>	<b>5.7</b>	<b>5.2</b>	<b>6.0</b>	<b>6.2</b>
<b>6H</b>	<b>6.0</b>	<b>6.7</b>	<b>6.3</b>	<b>7.0</b>	<b>7.2</b>	<b>4.8</b>	<b>5.6</b>	<b>5.2</b>	<b>5.9</b>	<b>6.1</b>
<b>8H</b>	<b>5.9</b>	<b>6.6</b>	<b>6.2</b>	<b>6.9</b>	<b>7.2</b>	<b>4.8</b>	<b>5.5</b>	<b>5.1</b>	<b>5.8</b>	<b>6.1</b>
<b>12H</b>	<b>5.9</b>	<b>6.6</b>	<b>6.2</b>	<b>6.8</b>	<b>7.1</b>	<b>4.8</b>	<b>5.4</b>	<b>5.1</b>	<b>5.7</b>	<b>6.0</b>
<b>4H 2H</b>	<b>5.7</b>	<b>6.5</b>	<b>6.0</b>	<b>6.8</b>	<b>7.0</b>	<b>4.8</b>	<b>5.6</b>	<b>5.1</b>	<b>5.8</b>	<b>6.1</b>
<b>3H</b>	<b>6.2</b>	<b>6.8</b>	<b>6.5</b>	<b>7.1</b>	<b>7.4</b>	<b>5.2</b>	<b>5.8</b>	<b>5.5</b>	<b>6.1</b>	<b>6.4</b>
<b>4H</b>	<b>6.2</b>	<b>6.8</b>	<b>6.5</b>	<b>7.1</b>	<b>7.5</b>	<b>5.2</b>	<b>5.8</b>	<b>5.5</b>	<b>6.1</b>	<b>6.4</b>
<b>6H</b>	<b>6.1</b>	<b>6.7</b>	<b>6.5</b>	<b>7.0</b>	<b>7.4</b>	<b>5.1</b>	<b>5.6</b>	<b>5.5</b>	<b>6.0</b>	<b>6.3</b>
<b>8H</b>	<b>6.1</b>	<b>6.6</b>	<b>6.5</b>	<b>6.9</b>	<b>7.3</b>	<b>5.0</b>	<b>5.5</b>	<b>5.4</b>	<b>5.9</b>	<b>6.3</b>
<b>12H</b>	<b>6.0</b>	<b>6.5</b>	<b>6.4</b>	<b>6.9</b>	<b>7.3</b>	<b>5.0</b>	<b>5.4</b>	<b>5.4</b>	<b>5.8</b>	<b>6.2</b>
<b>8H 4H</b>	<b>6.1</b>	<b>6.6</b>	<b>6.5</b>	<b>7.0</b>	<b>7.4</b>	<b>5.1</b>	<b>5.6</b>	<b>5.5</b>	<b>6.0</b>	<b>6.4</b>
<b>6H</b>	<b>6.0</b>	<b>6.4</b>	<b>6.4</b>	<b>6.8</b>	<b>7.3</b>	<b>5.0</b>	<b>5.4</b>	<b>5.4</b>	<b>5.8</b>	<b>6.3</b>
<b>8H</b>	<b>5.9</b>	<b>6.3</b>	<b>6.4</b>	<b>6.8</b>	<b>7.2</b>	<b>4.9</b>	<b>5.3</b>	<b>5.4</b>	<b>5.7</b>	<b>6.2</b>
<b>12H</b>	<b>5.9</b>	<b>6.2</b>	<b>6.4</b>	<b>6.7</b>	<b>7.2</b>	<b>4.9</b>	<b>5.2</b>	<b>5.4</b>	<b>5.7</b>	<b>6.2</b>
<b>12H 4H</b>	<b>6.0</b>	<b>6.5</b>	<b>6.5</b>	<b>6.9</b>	<b>7.3</b>	<b>5.0</b>	<b>5.5</b>	<b>5.5</b>	<b>5.9</b>	<b>6.3</b>
<b>6H</b>	<b>5.9</b>	<b>6.3</b>	<b>6.4</b>	<b>6.8</b>	<b>7.2</b>	<b>4.9</b>	<b>5.3</b>	<b>5.4</b>	<b>5.7</b>	<b>6.2</b>
<b>8H</b>	<b>5.9</b>	<b>6.2</b>	<b>6.4</b>	<b>6.7</b>	<b>7.2</b>	<b>4.9</b>	<b>5.2</b>	<b>5.4</b>	<b>5.7</b>	<b>6.2</b>
<b>Variations with the observer position at spacings:</b>										
<b>S = 1.0H</b>	<b>+ 2.0 / - 1.9</b>					<b>+ 1.4 / - 1.7</b>				
<b>1.5H</b>	<b>+ 3.5 / - 1.4</b>					<b>+ 2.5 / - 1.2</b>				
<b>2.0H</b>	<b>+ 0.9 / - 0.9</b>					<b>+ 1.0 / - 0.9</b>				

CIE Pub.117, 860.3 lm Total Lamp Luminous Flux Correct (8log(F/F0) = -0.5)  
 Area: 0.125 m2

**C Range: 0 - 360DEG**  
**C Interval: 22.5DEG**  
**Test Speed: HIGH**  
**Temperature:15DEG**  
**Operators:**  
**Test Date:2020-09-27**

**γ Range: 0 - 180DEG**  
**γ Interval: 1.0DEG**  
**Test System:EVERFINE GO-2000A\_V1 SYSTEM V2.0.407.13**  
**Humidity:71%**  
**Test Distance:6.700m [K=1.0000]**  
**Remarks:**

**UTILIZATION FACTORS TABLE**

Test:U:230.10V I:0.0431A P:9.1397W PF:0.9209 Freq:50.00Hz Lamp Flux:860.28x1 lm		
NAME:	TYPE:LED	WEIGHT:
SPEC.:9w	DIM.:	SERIAL No.:1
MFR.: EVERFINE	SUR.:	Shielding Angle:

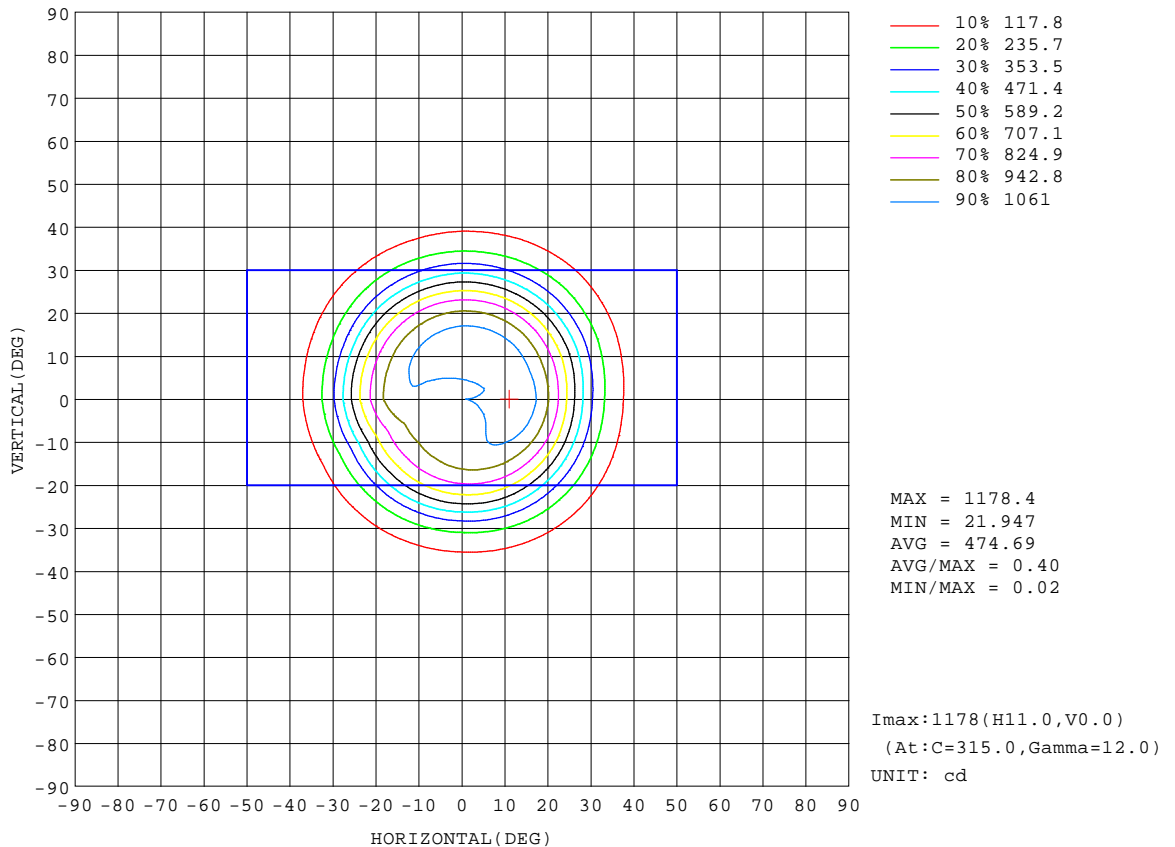
REFLECTANCE										
Ceiling	0.8	0.8	0.8	0.7	0.7	0.7	0.5	0.5	0.5	0
Walls	0.7	0.5	0.3	0.7	0.5	0.3	0.7	0.5	0.3	0
Working plane	0.2	0.2	0.2	0.2	0.2	0.2	0.2	0.2	0.2	0
ROOM INDEX	UTILIZATION FACTORS(PERCENT) $k(RI) \times RCR = 5$									
$k = 0.60$	86	79	75	85	79	75	85	79	75	71
0.80	93	87	83	93	87	83	91	86	83	79
1.00	98	92	88	97	92	88	95	91	87	83
1.25	102	97	93	101	96	93	99	95	92	87
1.50	105	100	96	104	99	96	101	98	95	90
2.00	108	103	100	106	102	99	103	100	98	92
2.50	110	106	102	108	104	102	105	102	100	93
3.00	111	108	105	109	106	104	106	103	101	95
4.00	113	110	108	111	109	107	107	105	104	96
5.00	115	112	110	112	110	109	108	107	105	98
ROOM INDEX	UF(total)									Direct
According to DIN EN 13032-2 2004			Suspended				SHRNOM = 1.25			

C Range: 0 - 360DEG  
 C Interval: 22.5DEG  
 Test Speed: HIGH  
 Temperature:15DEG  
 Operators:  
 Test Date:2020-09-27

$\gamma$  Range: 0 - 180DEG  
 $\gamma$  Interval: 1.0DEG  
 Test System:EVERFINE GO-2000A\_V1 SYSTEM V2.0.407.13  
 Humidity:71%  
 Test Distance:6.700m [K=1.0000]  
 Remarks:

**ISOCANDELA DIAGRAM**

Test:U:230.10V I:0.0431A P:9.1397W PF:0.9209 Freq:50.00Hz Lamp Flux:860.28x1 lm		
NAME:	TYPE:LED	WEIGHT:
SPEC.:9w	DIM.:	SERIAL No.:1
MFR.: EVERFINE	SUR.:	Shielding Angle:



**C Range: 0 - 360DEG**  
**C Interval: 22.5DEG**  
**Test Speed: HIGH**  
**Temperature:15DEG**  
**Operators:**  
**Test Date:2020-09-27**

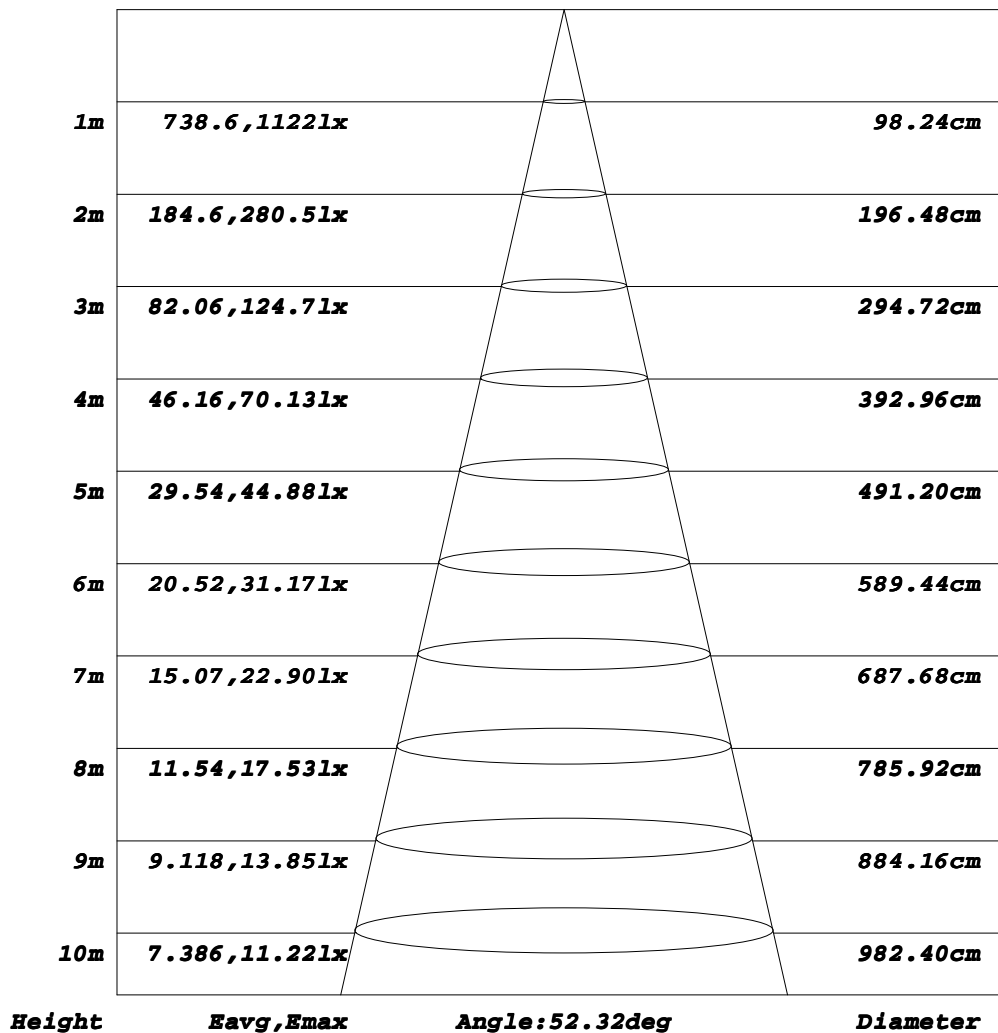
**γ Range: 0 - 180DEG**  
**γ Interval: 1.0DEG**  
**Test System:EVERFINE GO-2000A\_V1 SYSTEM V2.0.407.13**  
**Humidity:71%**  
**Test Distance:6.700m [K=1.0000]**  
**Remarks:**



**AAI Figure**

Test:U:230.10V I:0.0431A P:9.1397W PF:0.9209 Freq:50.00Hz Lamp Flux:860.28x1 lm		
NAME:	TYPE:LED	WEIGHT:
SPEC.:9w	DIM.:	SERIAL No.:1
MFR.: EVERFINE	SUR.:	Shielding Angle:

**Flux out:602.4 lm**



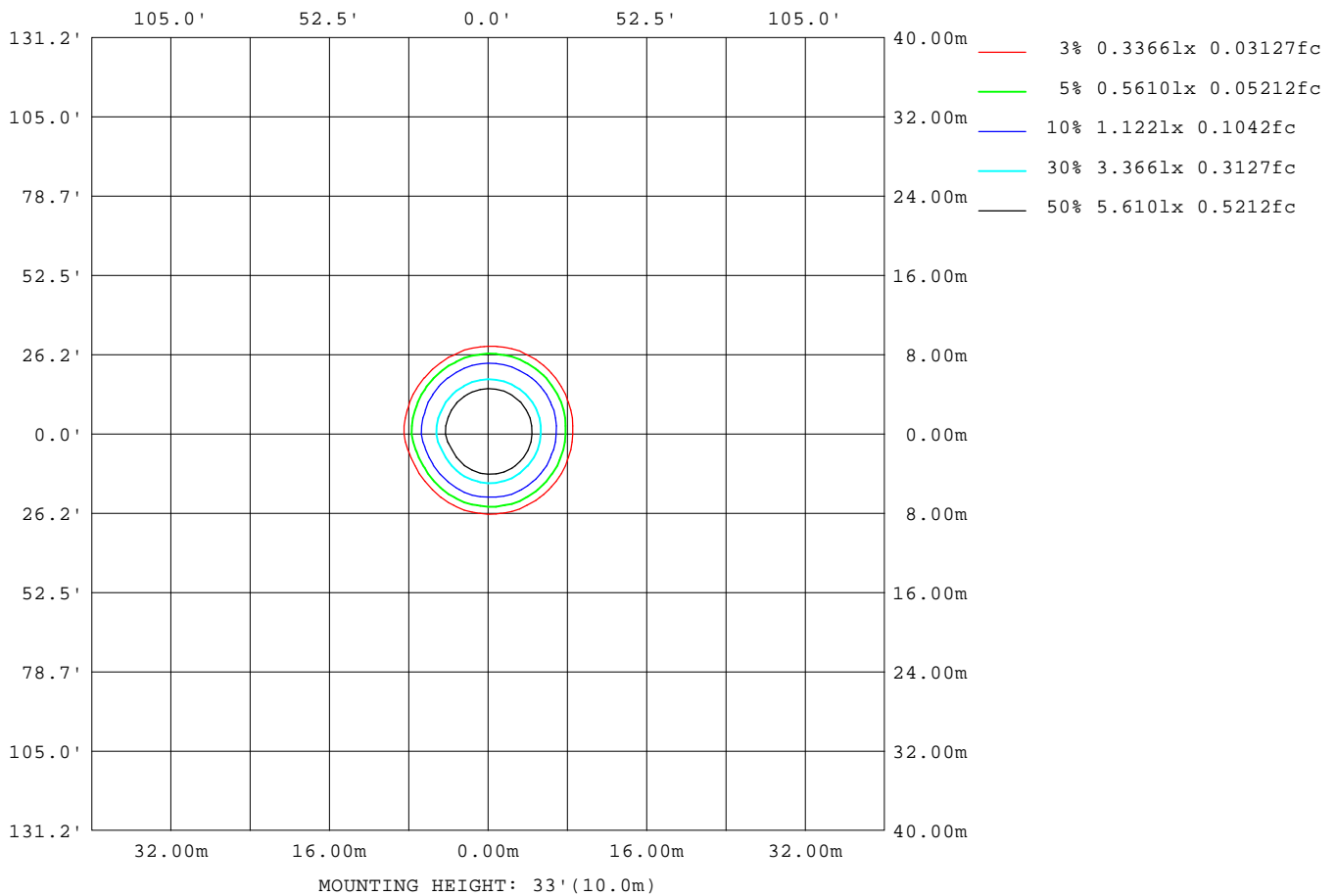
Note: The Curves indicate the illuminated area and the average illumination when the luminaire is at different distance.

**C Range: 0 - 360DEG**  
**C Interval: 22.5DEG**  
**Test Speed: HIGH**  
**Temperature: 15DEG**  
**Operators:**  
**Test Date: 2020-09-27**

**γ Range: 0 - 180DEG**  
**γ Interval: 1.0DEG**  
**Test System: EVERFINE GO-2000A\_V1 SYSTEM V2.0.407.13**  
**Humidity: 71%**  
**Test Distance: 6.700m [K=1.0000]**  
**Remarks:**

**ISOLUX DIAGRAM**

Test:U:230.10V I:0.0431A P:9.1397W PF:0.9209 Freq:50.00Hz Lamp Flux:860.28x1 lm		
NAME:	TYPE:LED	WEIGHT:
SPEC.:9w	DIM.:	SERIAL No.:1
MFR.: EVERFINE	SUR.:	Shielding Angle:



**C Range: 0 - 360DEG**  
**C Interval: 22.5DEG**  
**Test Speed: HIGH**  
**Temperature: 15DEG**  
**Operators:**  
**Test Date: 2020-09-27**

**γ Range: 0 - 180DEG**  
**γ Interval: 1.0DEG**  
**Test System: EVERFINE GO-2000A\_V1 SYSTEM V2.0.407.13**  
**Humidity: 71%**  
**Test Distance: 6.700m [K=1.0000]**  
**Remarks:**

**LED Avg.L Report**

Test:U:230.10V I:0.0431A P:9.1397W PF:0.9209 Freq:50.00Hz Lamp Flux:860.28x1 lm		
NAME:	TYPE:LED	WEIGHT:
SPEC.:9w	DIM.:	SERIAL No.:1
MFR.: EVERFINE	SUR.:	Shielding Angle:

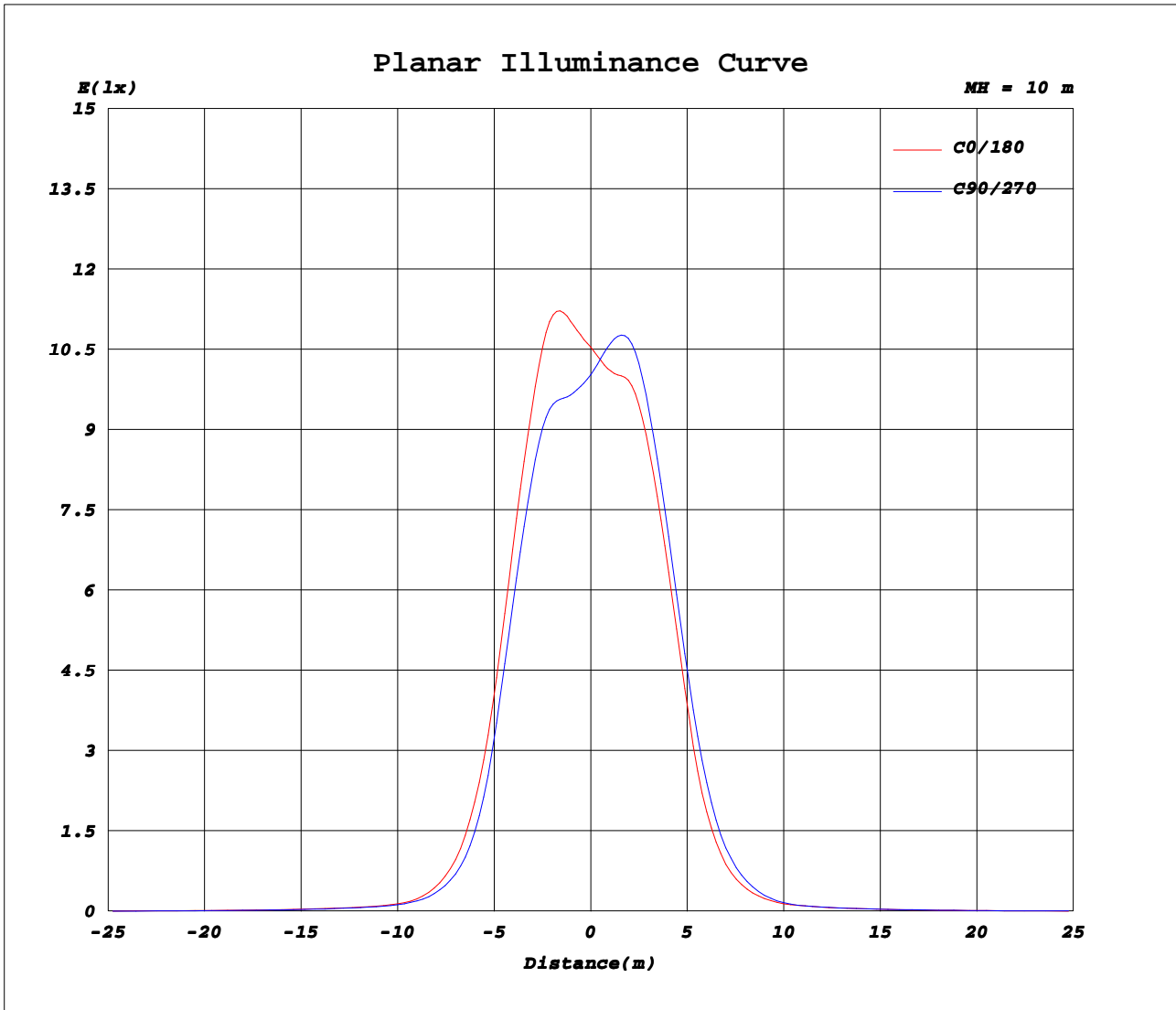
AvgL	cd/m2
L_0~180(65)av	241
L_0~180(75)av	103
L_0~180(85)av	7
L_90~270(65)av	239
L_90~270(75)av	98
L_90~270(85)av	8
L_45(65)av	239
L_45(75)av	100
L_45(85)av	8

Standard: GB/T 29293-2012

**C Range: 0 - 360DEG**  
**C Interval: 22.5DEG**  
**Test Speed: HIGH**  
**Temperature:15DEG**  
**Operators:**  
**Test Date:2020-09-27**

**γ Range: 0 - 180DEG**  
**γ Interval: 1.0DEG**  
**Test System:EVERFINE GO-2000A\_V1 SYSTEM V2.0.407.13**  
**Humidity:71%**  
**Test Distance:6.700m [K=1.0000]**  
**Remarks:**

**Planar Illuminance Curve**



**C Range: 0 - 360DEG**  
**C Interval: 22.5DEG**  
**Test Speed: HIGH**  
**Temperature: 15DEG**  
**Operators:**  
**Test Date: 2020-09-27**

**γ Range: 0 - 180DEG**  
**γ Interval: 1.0DEG**  
**Test System: EVERFINE GO-2000A\_V1 SYSTEM V2.0.407.13**  
**Humidity: 71%**  
**Test Distance: 6.700m [K=1.0000]**  
**Remarks:**

**LUMINOUS DISTRIBUTION INTENSITY DATA**

Test:U:230.10V I:0.0431A P:9.1397W PF:0.9209 Freq:50.00Hz Lamp Flux:860.28x1 lm		
NAME:	TYPE:LED	WEIGHT:
SPEC.:9w	DIM.:	SERIAL No.:1
MFR.: EVERFINE	SUR.:	Shielding Angle:

Table--1

UNIT: cd

C (DEG) \ γ (DEG)	0	22.5	45	67.5	90	112.5	135	157.5	180	202.5	225	247.5	270	292.5	315	337.5			
0	1013	1013	1013	1013	1013	1013	1013	1013	1013	1013	1013	1013	1013	1013	1013	1013			
5	1064	1044	1024	1005	991	979	974	980	986	1010	1035	1058	1077	1088	1087	1077			
10	1128	1101	1072	1036	1008	990	986	997	1004	1036	1075	1109	1138	1156	1161	1152			
15	1088	1066	1032	1003	982	962	952	958	983	1015	1056	1090	1118	1133	1142	1139			
20	914	892	861	838	818	801	789	796	846	872	910	943	973	987	994	981			
25	641	623	595	578	553	541	532	541	609	636	671	702	728	743	745	730			
30	356	339	317	298	278	270	268	277	327	346	382	409	439	443	444	429			
35	169	158	147	139	128	124	121	128	153	165	186	203	218	225	227	215			
40	75.9	74.0	68.3	64.3	61.4	59.6	57.3	59.8	73.7	77.7	83.0	91.6	102	106	105	95.2			
45	37.4	37.6	36.9	36.3	35.2	34.8	34.7	35.6	38.6	39.6	40.2	42.2	46.1	48.6	46.8	43.5			
50	28.1	28.4	28.0	27.4	26.6	26.3	26.4	26.9	28.7	29.2	29.3	29.8	30.5	30.9	30.6	30.2			
55	22.4	22.6	21.9	21.3	20.6	20.7	20.6	20.9	22.5	22.9	22.9	23.6	24.4	24.8	24.2	23.8			
60	18.1	18.2	17.2	16.2	16.0	16.4	16.1	16.3	18.0	18.5	18.5	18.9	19.7	20.0	19.4	18.9			
65	13.0	12.9	12.0	11.4	11.0	11.1	10.9	11.2	12.4	13.0	13.2	13.7	14.2	14.5	14.3	14.0			
70	7.69	7.53	6.92	6.55	6.36	6.46	6.35	6.49	7.65	7.97	8.12	8.42	8.82	8.98	8.99	8.81			
75	3.10	3.02	2.62	2.44	2.38	2.45	2.46	2.61	3.54	3.70	3.74	3.77	3.97	4.09	4.09	4.02			
80	0.25	0.24	0.27	0.24	0.26	0.24	0.27	0.24	0.35	0.38	0.36	0.38	0.38	0.40	0.43	0.40			
85	0.08	0.06	0.09	0.06	0.10	0.06	0.10	0.05	0.07	0.11	0.08	0.12	0.08	0.11	0.08	0.10			
90	0.02	0.02	0.02	0.02	0.02	0.02	0.02	0.02	0.01	0.02	0.01	0.01	0.00	0.01	0.00	0.01			
95	0.02	0.04	0.02	0.04	0.02	0.04	0.02	0.04	0.03	0.01	0.02	0.01	0.02	0.01	0.01	0.01			
100	0.03	0.06	0.03	0.06	0.03	0.06	0.03	0.06	0.05	0.02	0.04	0.01	0.04	0.01	0.03	0.01			
105	0.06	0.09	0.06	0.10	0.07	0.11	0.07	0.11	0.08	0.04	0.07	0.03	0.05	0.03	0.05	0.03			
110	0.12	0.15	0.13	0.17	0.15	0.18	0.15	0.18	0.12	0.08	0.11	0.07	0.09	0.07	0.10	0.07			
115	0.22	0.26	0.25	0.30	0.29	0.32	0.30	0.31	0.20	0.16	0.18	0.15	0.16	0.13	0.16	0.13			
120	0.42	0.46	0.47	0.52	0.53	0.56	0.54	0.54	0.36	0.32	0.33	0.28	0.29	0.25	0.29	0.26			
125	0.72	0.77	0.80	0.85	0.89	0.91	0.91	0.89	0.63	0.58	0.57	0.52	0.52	0.49	0.50	0.50			
130	1.11	1.16	1.22	1.28	1.33	1.36	1.36	1.33	1.00	0.96	0.93	0.88	0.86	0.83	0.84	0.84			
135	1.58	1.64	1.72	1.79	1.85	1.88	1.89	1.86	1.50	1.45	1.39	1.34	1.29	1.27	1.26	1.27			
140	2.09	2.18	2.26	2.34	2.40	2.45	2.46	2.44	2.07	2.00	1.93	1.86	1.80	1.78	1.77	1.80			
145	2.65	2.74	2.81	2.91	2.97	3.01	3.03	3.01	2.67	2.58	2.51	2.41	2.36	2.33	2.33	2.36			
150	3.21	3.31	3.37	3.47	3.52	3.57	3.57	3.56	3.26	3.15	3.09	2.99	2.95	2.91	2.91	2.94			
155	3.73	3.83	3.87	3.98	4.03	4.06	4.04	4.03	3.78	3.67	3.62	3.54	3.53	3.48	3.49	3.51			
160	4.14	4.23	4.28	4.37	4.42	4.43	4.40	4.38	4.18	4.08	4.06	4.02	4.03	4.00	4.00	4.01			
165	4.48	4.57	4.59	4.67	4.70	4.72	4.68	4.65	4.52	4.40	4.40	4.38	4.41	4.40	4.41	4.41			
170	4.80	4.88	4.87	4.94	4.95	4.95	4.92	4.92	4.83	4.70	4.71	4.70	4.75	4.75	4.77	4.79			
175	5.08	5.14	5.09	5.14	5.13	5.15	5.14	5.16	5.12	4.99	5.01	4.99	5.05	5.05	5.09	5.10			
180	5.24	5.24	5.17	5.21	5.20	5.24	5.25	5.30	5.30	5.20	5.22	5.18	5.23	5.22	5.27	5.28			

**C Range: 0 - 360DEG**  
**C Interval: 22.5DEG**  
**Test Speed: HIGH**  
**Temperature: 15DEG**  
**Operators:**  
**Test Date: 2020-09-27**

**γ Range: 0 - 180DEG**  
**γ Interval: 1.0DEG**  
**Test System: EVERFINE GO-2000A\_V1 SYSTEM V2.0.407.13**  
**Humidity: 71%**  
**Test Distance: 6.700m [K=1.0000]**  
**Remarks:**